

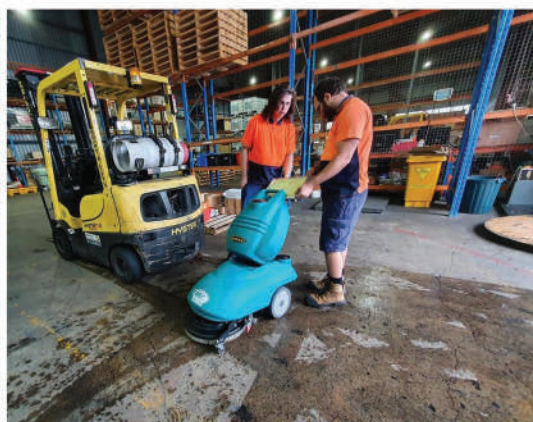
# ASC EUREKA E46

SCRUBBER-DRYER LINE

PRECISE CLEANING  
IN RESTRICTED SPACES



MECHANICAL®



@ [WWW.SWEEPER.COM.AU](http://WWW.SWEEPER.COM.AU)

FREE CALL 1800 650 989

**asc**  
DESIGNED TO CLEAN.  
BUILT TO LAST



# ASC EUREKA E46

## WALK-BEHIND SCRUBBER-DRYER

### Precise cleaning in confined spaces

The only 460 mm walk-behind scrubber-dryer that can clean and dry in the angles which are inaccessible to traditional scrubber-dryers. The ASC E46's compact design and maneuverability allow it to access hard to reach areas and to obtain perfect cleaning results around objects and obstacles.

The ASC E46's 460 mm cleaning path, and 3,5 km/h operating speed guarantee an hourly productivity rate of 1.600 m<sup>2</sup>/h.

It is impossible to clean a floor properly without sufficient water. The ASC E46's tanks have an impressive capacity, the 28 L solution tank and 30 L recovery tank, provide the water flow necessary to obtain real results. These large tanks are a unique feature, making it possible to clean for longer without interrupting the job in hand to empty and refill the tanks.

### FEATURES

- Brush drive
- Battery included
- Onboard battery charger
- Automatic brush coupling system
- Battery charge level indicator
- PPL Brush
- The ASC E46 has a 460 mm cleaning path, and a 3,5 km/h operating speed, which guarantee an hourly productivity rate of 1.610 m<sup>2</sup>/h.
- 28 L solution tank and 30 L recovery tank
- The machine is available in battery version, with two 12V batteries which guarantee an impressive uptime of 2 hours and 10 minutes, and in cable version, providing unlimited uptime
- Also available in Chrome® version, with a stainless-steel frame

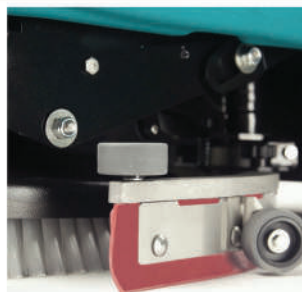
### \* TWO VERSIONS AVAILABLE

- AGM: 2 x 12V batteries, providing maximum freedom to move around the space being cleaned
- CABLE: with a power cord, for unlimited running time



#### SOLUTION FLOW

It is impossible to properly clean a floor without sufficient water. The ASC E46 has a 28 L capacity solution tank, which makes it possible to deliver the perfect volume of water to obtain exceptional results.



#### DRYING AND WATER PICKUP

The innovative water pickup system, guarantees optimum dirt removal and perfect drying. Leaving behind a clean and dry floor which is immediately ready for traffic.



#### TOOL FREE BRUSH CHANGE

Choose the brush or abrasive pad best suited to your floors. We offer a wide range of solutions, which can be easily changed without the need for tools.



#### ONBOARD BATTERY CHARGER

Two 12V batteries provide 2 hours and 10 minutes of continuous uptime with every charge cycle. The onboard battery charger is protected in a steel case and is easy to access.



FREE CALL 1800 650 989



WWW.SWEEPER.COM.AU





## SAFETY

For added safety the ASC E46 has a starter key. The brush motor and electric circuit are protected by a resettable fuse, which interrupts the power supply should an anomaly occur.



## TOTAL COMFORT

The ASC E46 has an ergonomic handle, which can be adjusted to the height of the operator for maximum comfort during use.

## M - MECHANICAL®

Created following the "Electronic-Free" philosophy, the functions of an M line machine are mechanically activated. This ensures the unit is simple to use and easy to maintain, suitable even for inexperienced operators.



MECHANICAL®



MADE IN ITALY



CHROME®



LINATEX® /OLIRES®



LI-ION ENERGY+®

ERGONOMIC HANDLES

REMOVABLE REFILL TANK

SOLUTION TANK

EASY BRUSH CHANGE



FREE CALL 1800 650 989



WWW.SWEEPER.COM.AU

## VERSIONS

ASC E46 AGM /LI-ION (Two 12V batteries, 2 hours and 10 minutes of uptime)  
ASC E46 CABLE (with a power cord, unlimited uptime)

## APPLICATIONS

Restaurants, kitchens, bars, gyms, swimming pools, changing rooms, hospitals, small manufacturing facilities, supermarkets, offices, shops and other small to medium sized surfaces.

## SURFACES

Ceramic, marble, cement, linoleum, porcelain tiles, rubber.



TECHNICAL SPECIFICATIONS	ASC E46 AGM	ASC E46 CABLE
CLEANING PATH	460 mm	460 mm
FORWARD SPEED	3,5 km/h	3,5 km/h
HOURLY PERFORMANCE	1.610 m2/h	1.610 m2/h
SOLUTION TANK CAPACITY	28 L	28 L
RECOVERY TANK CAPACITY	30 L	30 L
BRUSH PRESSURE	35 kg	35 kg
SUPPLY VOLTAGE	24 V	230 V
WEIGHT	103 kg	50 kg
DIMENSIONS WITHOUT SQUEEGEE	830x540x1.000	830x540x1.000
WIDTH WITH SQUEEGEE	540 mm	540 mm

ERGONOMIC HANDLE | PARABOLIC AND ADJUSTABLE SQUEEGEE | EASY TO STORE |  
REMOVEABLE TANKS | CLEANING SOLUTION DELIVERED TO THE CENTRE OF THE BRUSH  
| INSPECTABLE SOLUTION FILTER, CLOG-FREE

**ASC EUREKA E46 USED BY 1000'S IN AUSTRALIA**



**AUSTRALIAN SWEEPER CORPORATION PTY LTD**



02 9854 0900



POSTAL ADDRESS: PO BOX 3726 ROUSE HILL NSW 2155  
HEAD OFFICE: 6 MONEY CLOSE, ROUSE HILL, NSW 2155

**asc**  
DESIGNED TO CLEAN.  
BUILT TO LAST



**WWW.SWEEPER.COM.AU**



**FREE CALL 1800 650 989**